



CLOTHING | TRAINING | MENTORING

## ROH NEWS

Resources of Hope is a 501 (c)(3) non-profit organization dedicated to providing resources to help meet the physical and emotional needs of foster youth living in Johnson and surrounding counties.

## UPDATES

Hello! We have so many exciting things happening at Resources of Hope and we can't wait to share them with you! We are really looking forward to our newest program Recharge!

### What is Recharge?

Recharge is a partnership between Greenwood Christian Church and Resources of Hope to offer an afternoon off for foster parents in our community. High school and adult volunteers from Greenwood Christian Church will provide fun, safe and engaging activities for your foster kiddos and other children in the home. Recharge is for children ages newborn to 5th grade. This event will be taking place on November 10th from 2-5pm at Greenwood Christian Church. Visit [www.resourcesofhope.org](http://www.resourcesofhope.org) to register, and for more information. Registration is open, but spots are limited so make sure you sign up ASAP! Registration closes November 3rd.

### *In this newsletter:*

Our Board of Directors  
Page 2

Upcoming Events  
Page 2

Closet Needs  
Page 3

Volunteer Opportunitites  
Page 3

Foster Family Care Corner  
Page 4

Resource Hub  
Page 4

# Upcoming Events

October 11th: Teen Connect: Boys  
6pm-8pm

October 25th: Teen Connect: Girls  
6pm-8pm

November 2nd: Volunteer Orientation  
9:30am-10:30am

November 8th: Teen Connect: Boys  
6pm-8pm

November 10th: Recharge  
2pm-5pm

November 22nd: Teen Connect: Girls  
6pm-8pm

December 8th: Hope for the Holidays  
2pm-5pm

December 13th: TeenConnect: Coed  
6pm-8pm



Teen Connect is a program for foster care, kinship, and adopted teens ages 12-17. This is a time for kids to connect with other and just have fun.

Volunteer Orientation is a great event for people who want more information on volunteering at ROH.

## Hope for the Holidays

Please join us for our 2nd Annual Christmas Party on Sunday December 8th from 2pm-5pm in the Whiteland Community High School cafeteria. There will be food, pictures with Santa, gifts for all kids, and raffle items for foster parents! We would love to see you there so make sure you register on our website: [www.resourcesofhope.org](http://www.resourcesofhope.org) by December 1st.



## BOARD OF DIRECTORS

PRESIDENT: SUMMER HUBER  
VICE-PRESIDENT: MATTHEW KRESSE  
SECRETARY: ASHLEY SMITH  
TREASURER: SUE GLOVER

Penny Barrett  
Brian Brewer  
Wayne Feest  
Ruthie Leeth

Laurel Lithford  
Bryan Murray  
Savannah Necessary  
Lara Singleton

## Meet Wayne Feest

- What do you like to do in your spare time?  
I like to be useful.
- Where is the best place you've traveled to and why?  
Paris because of the history, beauty, romance.
- What are 3 words to describe ROH?  
Commitment, enjoyment, results
- Where is your favorite place to eat?  
Wells Pizza in Racine, Wisconsin
- What is the most important thing you have learned in the last five years?  
We need to understand our talents and constantly reinvent yourself.



# Thank you Volunteers!

Resources of Hope Relies 100% on volunteers. Volunteers play a vital role as part of the ROH Team. It is because of volunteers that ROH is able to provide resources to foster families.

We have a variety of service opportunities:  
**Clothing closet volunteers, special events, fundraising, grant writing, and more!**

Do you have a group or organization that would like to get involved by hosting a collection drive? We are currently looking for groups to host the following drives: Diaper, New Toys, New Pajamas, and New undies. For more info email Renae at [r.furnee@resourcesofhope.org](mailto:r.furnee@resourcesofhope.org)

If you are interesting in learning more about volunteering, visit our website:  
[www.resourcesofhope.org](http://www.resourcesofhope.org)

ROH is incredibly appreciative of any donation that we receive. Your tax deductible donation makes it possible to provide resources to help supplement the physical and emotional needs of foster children.



## Closet Needs

### General:

- Halloween Costumes
- Winter Coats
- New Stuffed Animals
- New Underwear
- New/Gently used Toddler Socks

### Baby:

- New Sippy Cups
- Diapers
- New/Gently Used Baby Bottles
- Car Seats
- Pack and Play

### For our Office:

- Stamps
- Storage Totes
- Gift Cards

Shop our Registry on Amazon by visiting our website. Click on the donate tab, and then the link to our wish list!

You can also designate Resources of Hope as your organization of choice on Amazon Smile.

Online Financial Donations can be made on our website.

Checks can also be made and mailed to:  
Resources of Hope  
410 US 31 Suite R, Whiteland IN 46184

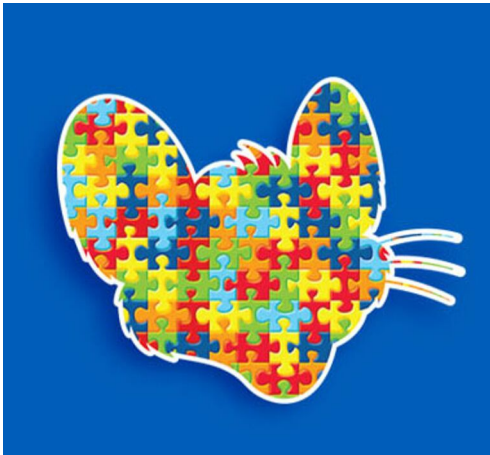
### Halloween is Coming!

Stop by ROH to get your kiddo a Halloween costume. Pick out the perfect costume so that you and your family can have a fantastic night.

# Resource Parent Hub



**Sensory Sensitive Sundays at Chuck E Cheese:**  
On the 1st Sunday of the month at participating locations Chuck E Cheese opens 2 hours early and offers a sensory friendly environment to children with special needs.



**Participating Locations:**  
Castleton  
Evansville  
Fort Wayne

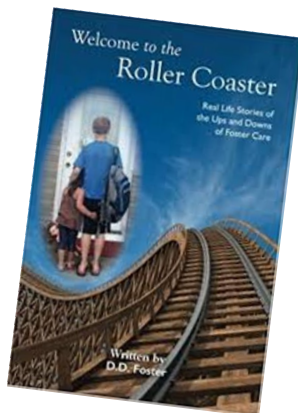
To learn more visit  
[www.chuckecheese.com/  
events](http://www.chuckecheese.com/events)



Looking for a good book to read?

**Welcome to the Roller Coaster**  
by DD Foster is

a collection of stories from fourteen foster moms who have, collectively, fostered over one hundred and thirty-five children. This collection provides many diverse perspectives which can offer advice and comfort to you as a foster parent.



# Foster Family Care Corner

Even if you aren't able foster yourself, there is still something we can all do something to help. There are so many ways you can help foster/safe family/kinship kids through helping their host family.  
Each month we will be highlighting one way.

### **\*Care Communities\***

Care communities are teams of 6-8 people that wrap around a foster family. They offer emotional, spiritual/prayer, and physical/financial support.

For more information on joining a care community please contact:

**Emmanuel Christian Church**  
Contact: Kerry Carmichael  
Email: [kcarmichael@eclife.org](mailto:kcarmichael@eclife.org)

**New Hope Christian Church**  
Contact: Donna Kempf  
Email: [Donna@sos34.com](mailto:Donna@sos34.com)



# Clothing Closet Hours

Monday	10:00 am - 6:00 pm
Wednesday	10:00 am - 6:00 pm
Friday	10:00 am - 6:00 pm
1st Saturday each month	9:00 am - 12:00 pm

410 US 31 Suite R, Whiteland IN 46184